

# OCEAN<sup>580</sup>

DEVELOPER, SALES & MARKETING:



# OCEAN<sup>580</sup>

OPULENCE AWAITS



UNIT 202-902

## FIND YOUR PERFECT HAVEN.

ORAL REPRESENTATIONS CANNOT BE RELIED UPON AS CORRECTLY STATING REPRESENTATIONS OF THE DEVELOPER. FOR CORRECT REPRESENTATIONS, MAKE REFERENCE TO THIS BROCHURE AND TO THE DOCUMENTS REQUIRED BY SECTION 718.503, FLORIDA STATUTES, TO BE FURNISHED BY A DEVELOPER TO A BUYER OR LESSEE.

SKETCHES AND ILLUSTRATIONS ARE ARTIST'S RENDERINGS. DETAILS AND FIELD VARIATIONS ARE SUBJECT TO CHANGE. ALL DIMENSIONS ARE APPROXIMATE, AND ALL FLOOR PLANS AND DEVELOPMENT PLANS ARE SUBJECT TO CHANGE.

THERE ARE VARIOUS METHODS FOR CALCULATING THE TOTAL SQUARE FOOTAGE OF A CONDOMINIUM UNIT, AND DEPENDING ON THE METHOD OF CALCULATION, THE QUOTED SQUARE FOOTAGE OF A CONDOMINIUM UNIT MAY VARY BY MORE THAN A NOMINAL AMOUNT. THE DIMENSIONS STATED IN THIS BROCHURE ARE MEASURED TO THE EXTERIOR BOUNDARIES OF THE EXTERIOR WALLS AND THE CENTERLINE OF INTERIOR DEMISING WALLS AND, IN FACT, ARE LARGER THAN THE DIMENSIONS OF THE "UNIT" AS DEFINED IN THE DECLARATION OF CONDOMINIUM FOR OCEAN 580 CONDOMINIUM, WHICH IS MEASURED USING INTERIOR MEASUREMENTS.



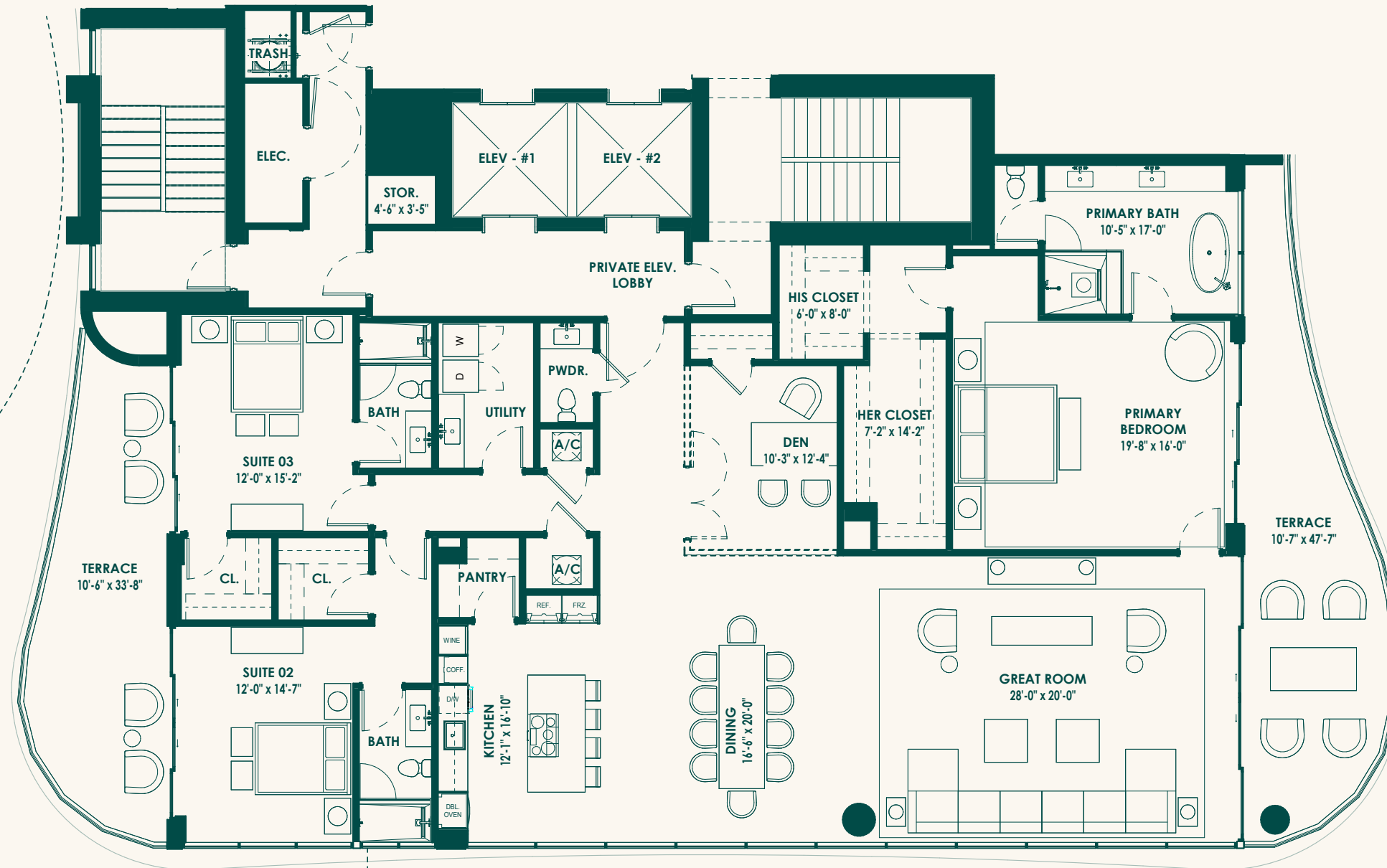
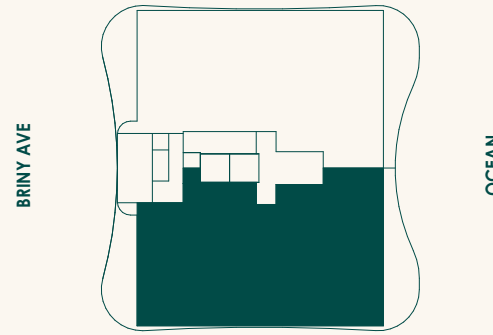
EQUAL HOUSING  
OPPORTUNITY

# UNIT 202-902

3 bedrooms + den | 3.5 bathrooms

202 | Interior 3,238 SF | Exterior 1,413 SF | Total 4,651 SF

302-902 | Interior 3,238 SF | Exterior 671 SF | Total 3,909 SF



UNIT 202  
TERRACE  
35'-6" x 44'-6"

DENOTES EXTENT OF  
LEVEL 02 TERRACE

OCEAN