

# OCEAN<sup>580</sup>

DEVELOPER, SALES & MARKETING:



# OCEAN<sup>580</sup>

OPULENCE AWAITS



UNIT 201-901

## FIND YOUR PERFECT HAVEN.

ORAL REPRESENTATIONS CANNOT BE RELIED UPON AS CORRECTLY STATING REPRESENTATIONS OF THE DEVELOPER. FOR CORRECT REPRESENTATIONS, MAKE REFERENCE TO THIS BROCHURE AND TO THE DOCUMENTS REQUIRED BY SECTION 718.503, FLORIDA STATUTES, TO BE FURNISHED BY A DEVELOPER TO A BUYER OR LESSEE.

SKETCHES AND ILLUSTRATIONS ARE ARTIST'S RENDERINGS. DETAILS AND FIELD VARIATIONS ARE SUBJECT TO CHANGE. ALL DIMENSIONS ARE APPROXIMATE, AND ALL FLOOR PLANS AND DEVELOPMENT PLANS ARE SUBJECT TO CHANGE.

THERE ARE VARIOUS METHODS FOR CALCULATING THE TOTAL SQUARE FOOTAGE OF A CONDOMINIUM UNIT, AND DEPENDING ON THE METHOD OF CALCULATION, THE QUOTED SQUARE FOOTAGE OF A CONDOMINIUM UNIT MAY VARY BY MORE THAN A NOMINAL AMOUNT. THE DIMENSIONS STATED IN THIS BROCHURE ARE MEASURED TO THE EXTERIOR BOUNDARIES OF THE EXTERIOR WALLS AND THE CENTERLINE OF INTERIOR DEMISING WALLS AND, IN FACT, ARE LARGER THAN THE DIMENSIONS OF THE "UNIT" AS DEFINED IN THE DECLARATION OF CONDOMINIUM FOR OCEAN 580 CONDOMINIUM, WHICH IS MEASURED USING INTERIOR MEASUREMENTS.



EQUAL HOUSING  
OPPORTUNITY

# UNIT 201-901

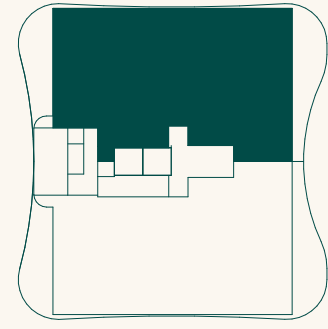
3 bedrooms + den | 3.5 bathrooms

201 | Interior 3,238 SF | Exterior 1,548 SF | Total 4,786 SF

301-901 | Interior 3,238 SF | Exterior 671 SF | Total 3,909 SF

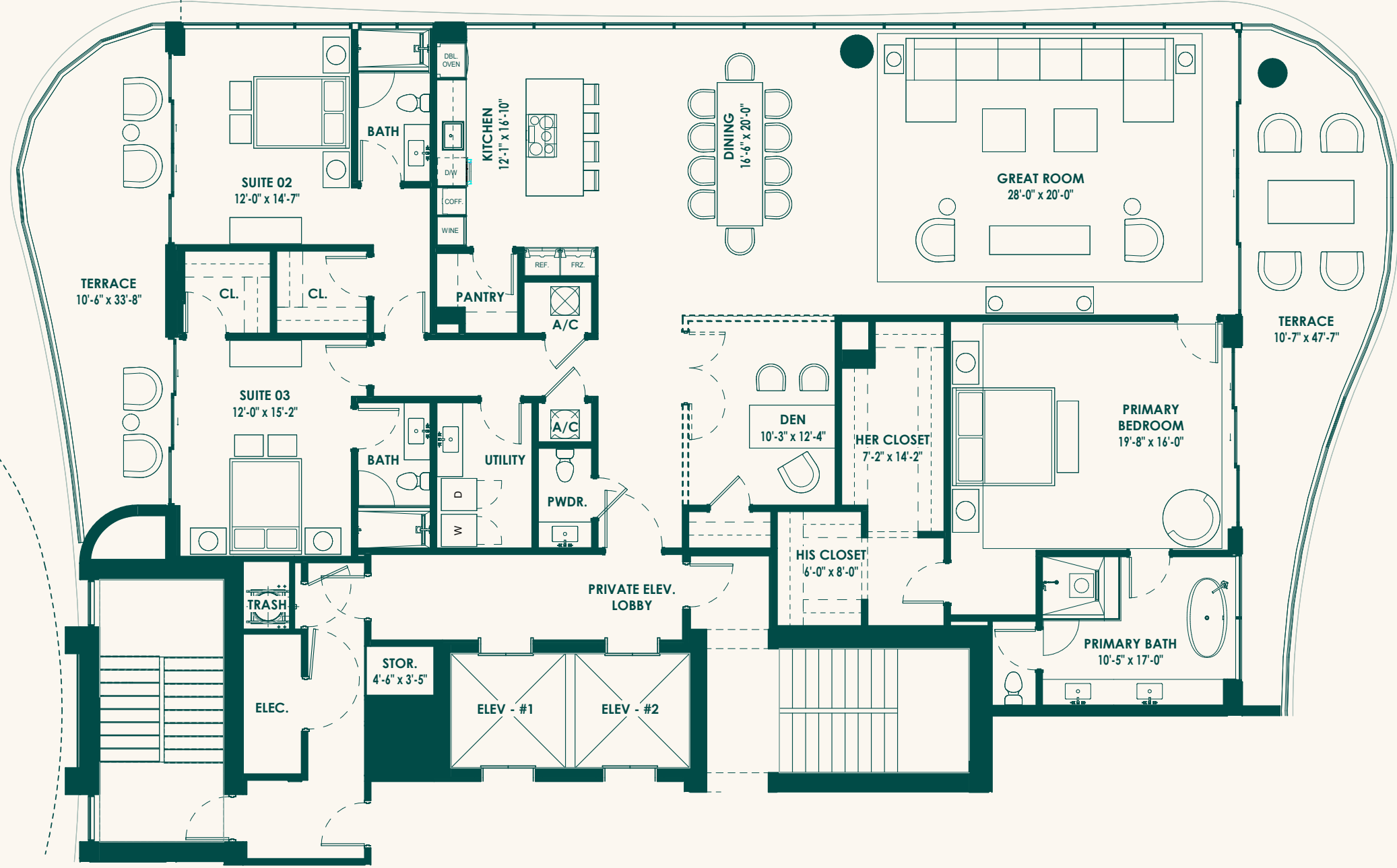
BRINY AVE

OCEAN



UNIT 201  
TERRACE  
21'-11" x 56'-8"

DENOTES EXTENT OF  
LEVEL 02 TERRACE



OCEAN

